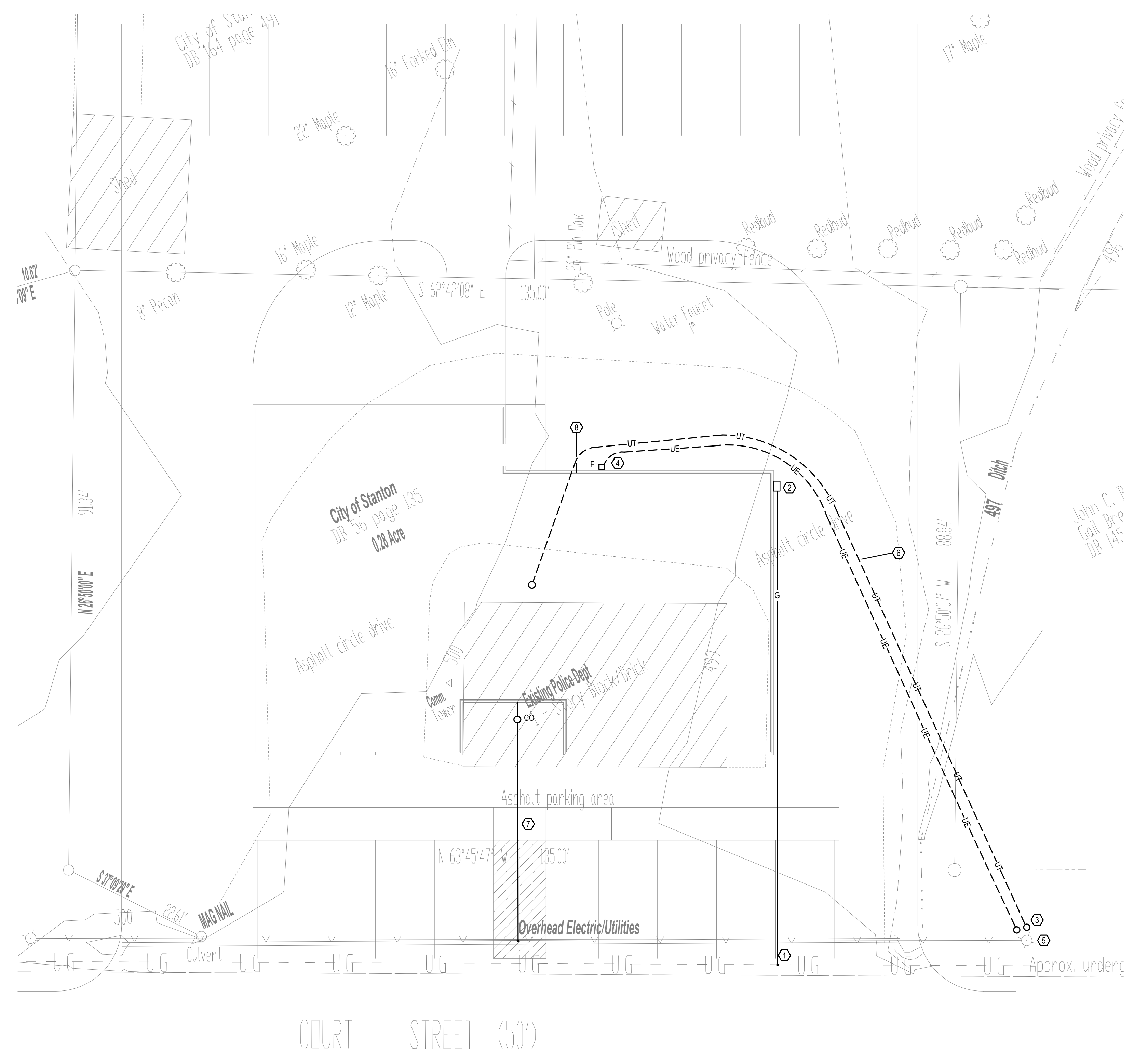


**CITY OF STANTON  
CITY HALL & POLICE STATION  
STANTON, KENTUCKY**



**SHEET NOTES**

- ① NATURAL GAS LINE & METER COORDINATE WITH LOCAL GAS SUPPLIER TO PROVIDE SERVICE & METERS. PAY ALL INSTALLATION & SOURCE CHARGES.
- ② PROVIDE GAS SERVICE TO THIS LOCATION.
- ③ COORDINATE WITH ELECTRIC COMPANY TO SET POLE MOUNTED TRANSFORMER.
- ④ PROVIDE CONDUIT DOWN POLE AND UNDERGROUND TO METER.  
ELECTRIC COMPANY TO INSTALL CONDUCTORS IN CONDUIT & SET METER. OBTAIN METER BASE FROM ELECTRIC COMPANY & SET IN PLACE. PAY ALL SERVICE AND INSTALLATION FEES.
- ⑤ COORDINATE LOCATION OF SERVICE POLE WITH ELECTRIC COMPANY.
- ⑥ PROVIDE 2" PVC CONDUIT FROM SERVICE POLE TO COMMUNICATIONS BACKBOARD IN BUILDING.
- ⑦ EXTEND 4" SANITARY HOUSE LINE TO SANITARY SEWER & TAP LINE. PAY ALL CONNECTION AND SERVICE FEES (NOTE: USE EXISTING TAP IF DEEMED APPROPRIATE BY LOCAL UTILITY.)
- ⑧ EXTEND WATER LINE TO EXISTING APPROXIMATELY 75'.

**GAS SERVICE**

HVAC	160 MBH
WATER HEATER	0 MBH
KITCHEN	0 MBH
APPLIANCES	0 MBH
<b>TOTAL</b>	<b>160 MBH</b>

DATE	REVISION	BY

PROJECT NO. 4065-01	DESIGNED BY TBM	DATE	JUNE 2015
DRAWN BY TBM	CHECKED BY MCG	SCALE	1:10
REVIEWED BY	DATE		

**MSE**

Meyers,  
Sudderth  
& Etheredge,  
Inc.  
ATTORNEYS AT LAW

624 Wallington Way  
Lexington, KY 40503

Phone: (606) 253-5884  
Fax: (606) 253-2007

**SITE UTILITIES PLAN**  
SCALE: 1:10

DRAWING NO.

**5-1**

SHEET OF